

NL-MBL-360x260-100W-xx-z

PRODUCT SPECIFICATIONS

Product code	NL-MBL-360x260-100W-xx-z
Voltage	130 V - 305 V
LED driver	MeanWell / Inventronics
System power	100 W
Frequency	50–60 Hz
Power factor (PF)	> 0,95
LED type	Alder AS-3030WNA2-C2C150-0201-YC8-C
Number of LEDs	168 pcs
Beam angle	110°, 80°, 30°/90°
PCB material	aluminum 2mm
Dimensions	362 mm x 257 mm x 120 mm
Weight	3,8 kg
Protection	IP65
Ambient temperature (ta)	-20° C – +45° C
Lifetime (L80)	min. 100 000 h
Color rendering index	Ra>80
Color tolerance	3 SDCM
Housing color	white



MADE IN EU

IP65

IK10

DALI

1-10V

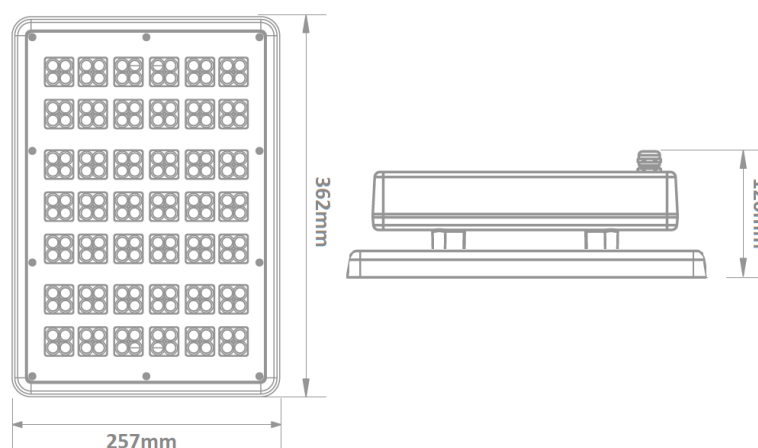
UGR

110°

80°

30°/90°

AL

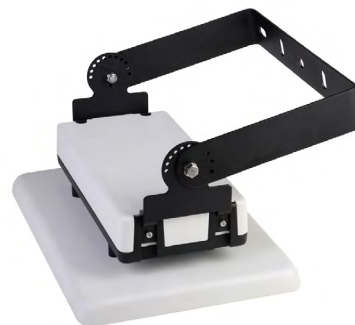
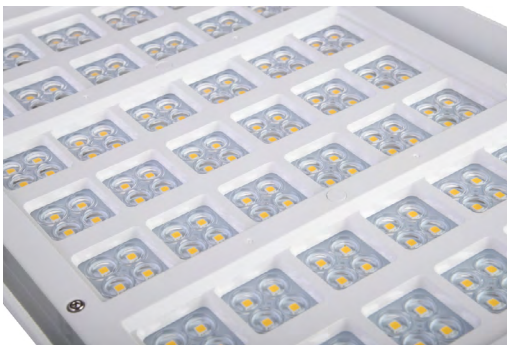


The aluminum body ensures optimum heat dissipation. The light fixture can be mounted with a bracket directly to the ceiling or as a pendant luminaire.

COLOR TEMPERATURE AND LUMINOUS FLUX

order no.	product code	diffuser / angle	CCT	color temperature	luminous flux
54310-65	NL-MBL-360x260-100W-WC-110	optics / 110°	6 500 K	cold white	14 870 lm
54310-50	NL-MBL-360x260-100W-WD-110	optics / 110°	5 000 K	daylight white	14 870 lm
54310-40	NL-MBL-360x260-100W-WN-110	optics / 110°	4 000 K	normal white	15 650 lm
54310-30	NL-MBL-360x260-100W-WW-110	optics / 110°	3 000 K	warm white	13 830 lm
54311-65	NL-MBL-360x260-100W-WC-80	optics / 80°	6 500 K	cold white	14 440 lm
54311-50	NL-MBL-360x260-100W-WD-80	optics / 80°	5 000 K	daylight white	14 440 lm
54311-40	NL-MBL-360x260-100W-WN-80	optics / 80°	4 000 K	normal white	15 200 lm
54311-30	NL-MBL-360x260-100W-WW-80	optics / 80°	3 000 K	warm white	13 430 lm
54312-65	NL-MBL-360x260-100W-WC-3090	optics / 30°/90°	6 500 K	cold white	14 870 lm
54312-50	NL-MBL-360x260-100W-WD-3090	optics / 30°/90°	5 000 K	daylight white	14 870 lm
54312-40	NL-MBL-360x260-100W-WN-3090	optics / 30°/90°	4 000 K	normal white	15 650 lm
54312-30	NL-MBL-360x260-100W-WW-3090	optics / 30°/90°	3 000 K	warm white	13 830 lm

Product code variants: -D ... DALI, -V ... 1-10V, -N ... emergency module



PRODUCT FEATURES

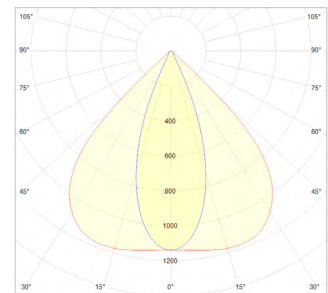
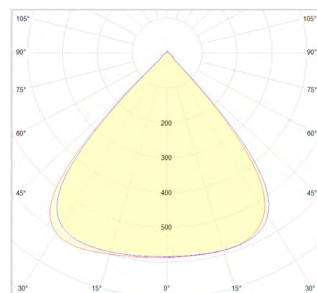
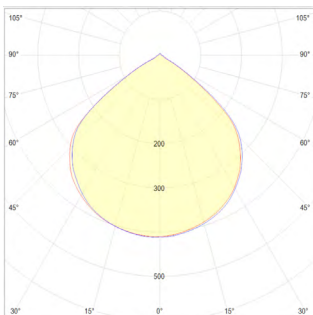
The MBL 100W luminaire, manufactured with the latest Alder LED technology, is intended for lighting in production and warehouse halls, workshops, shopping centers, sports halls and other areas.

The optics are specially developed to minimize glare and maximize homogeneity. Thanks to the anti-reflective foil on the lenses and a shield, the UGR is very low.

The pure aluminum construction with a thermal conductivity of 226 W / m · K ensures perfect heat dissipation and at the same time forms a supporting structure with high strength.

With a very high mechanical resistance IK10 and a degree of protection IP65, the luminaire can be used even in demanding environments.

The luminaire is also available as a DALI or 1-10V version, which offers various dimming and control options.



With several possible beam angles, the luminaire is ideal for installation in different heights and situations.

This product contains a light source with energy efficiency class C.